



Meter Pole Installations

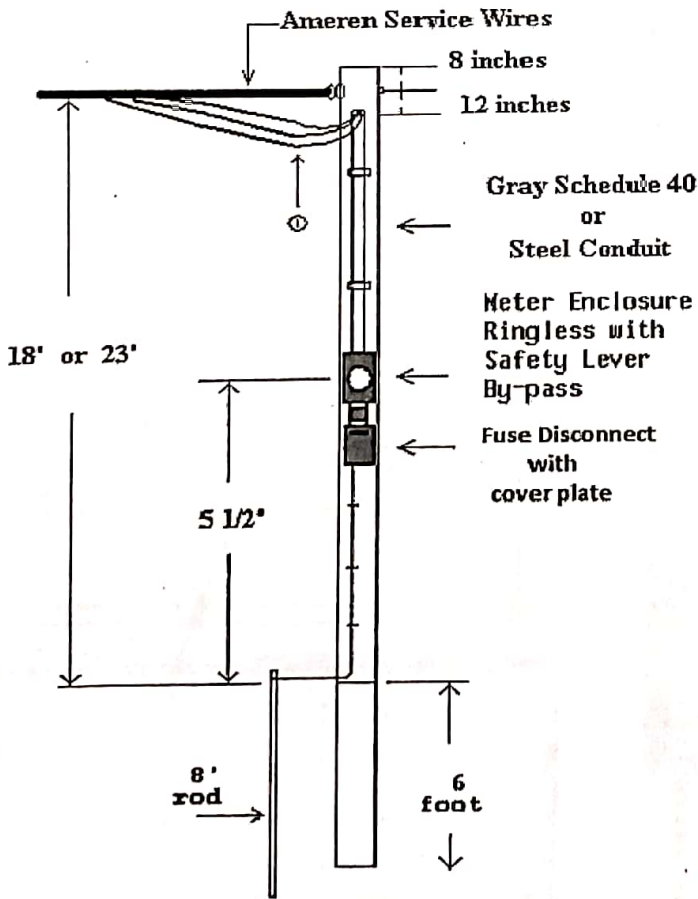
Construction Hotline
1-866-992-6619

100 or 200 Ampere Single Phase Overhead Service

- 1) Leave minimum of 36 inches leads
- 2) All wiring installed & owned by customer to meet the National Electrical Codes
- 3) Customer installed yard light requires a minimum clearance of 24".
- 4) If service wire length is over 75 feet an anchor & guy wire is required.
- 5) Customer installs bolt type service drop attachment insulator of adequate strength for attachment of Ameren's service drop.
- 6) Meter-enclosure installation use non-ferrous or galvanized screws. No dry wall type screws are accepted.
- 7) All unused knockouts in meter-socket or fuse disconnect must be plugged with standardized plugs.
- 8) 30' class 5 pole or 25' class 5 pole as required to meet National Electrical Codes.
- 9) Meter-enclosure to be U.L. approved & listed on Ameren approved meter enclosure list found in the Ameren Service Manual at www.Ameren.com/servicemanual

Refer to
Ameren Service Manual
For a complete list of company requirements.
www.Ameren.com/servicemanual

LUCAS HULSEY
Energy Services
Consultant



For Energy Efficiency Improvement
REBATES
Go to
AmerenMissouri.com/ActOnEnergy
Start saving today!

Recommended Service Cable

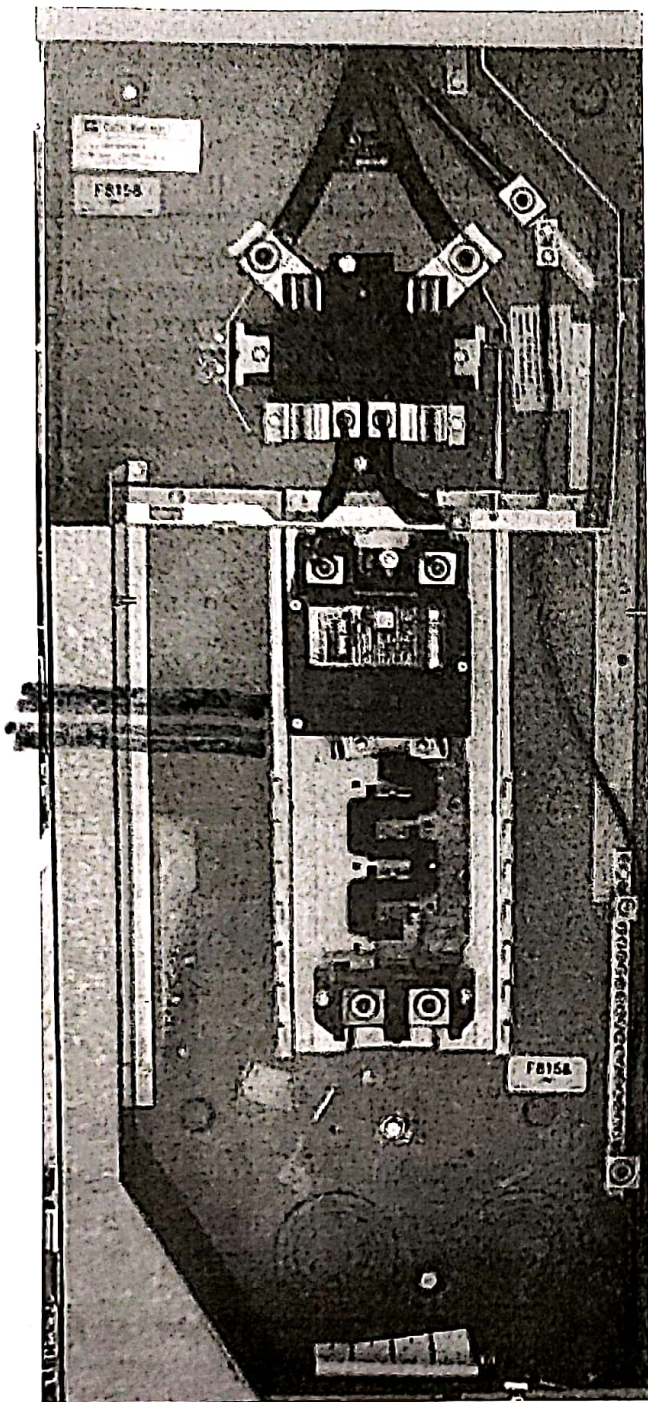
100 amps	# 2	Copper or 1/0 Aluminum
200 amps	# 2 /0	Copper or 4/0 Aluminum

Recommended Ground wire

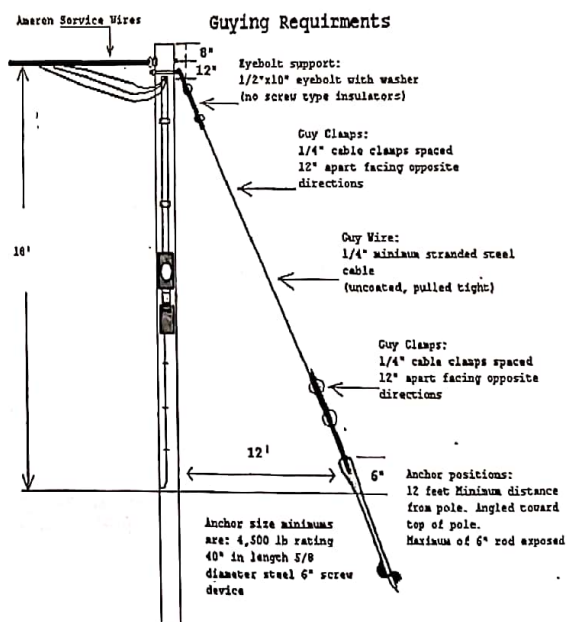
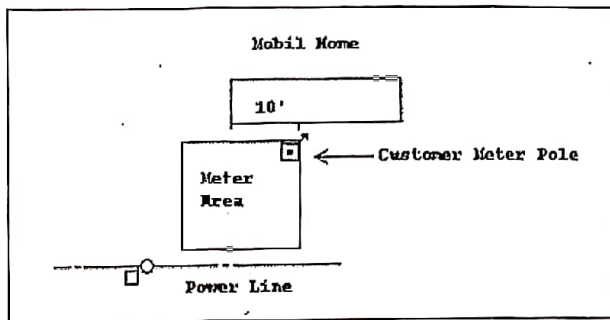
100 amps	#6 bare copper
200 amps	#4 bare copper

Note:

Additional charges may apply if mobile home has
No installed piped water facilities
Or
No installed sewer system.



Safety Lever By-Pass Meter Enclosure



Note: Meter-enclosure to be U.L. approved & listed on Ameren approved meter base list found in the Ameren Service Manual located at www.Ameren.com/servicemanual